



 **swenson**  
a brand of aebe schmidt

# VBEL eForce

Spreader



The VBEL eForce electric v-box spreader is ideal for a municipality or contractor looking for a large v-box spreader (26,000+ lbs. GVW) to mount in their dump body or on a flatbed. This spreader is used to spread salt, rock salt, sand, or other fine substances over large areas such as roads and parking lots. The VBEL eForce incorporates all the benefits of an electric drive system while maintaining the volume typically associated with hydraulic drive systems.

## Highlights

- **Dual electric motor power:** The system is powered by two independent electric motors.
- **Electric chain-fed operation:** Features an electrically driven chain-fed salt spreader.
- **Adjustable feed control:** Includes an adjustable feed gate to regulate material flow.
- **Variable casting range:** Capable of casting material from 4 feet up to 40 feet.
- **Maintenance-free stainless steel hopper:** Features 45° sloped sides and a standard inverted V design to reduce drag chain weight for optimal performance.

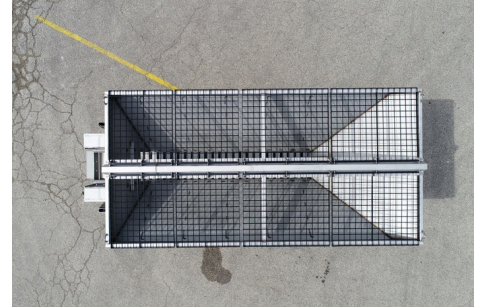
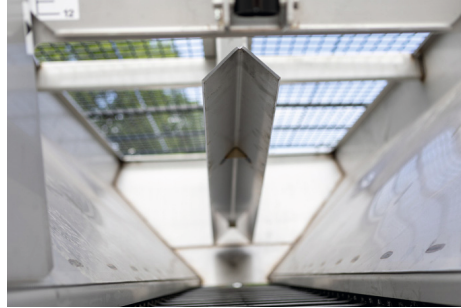
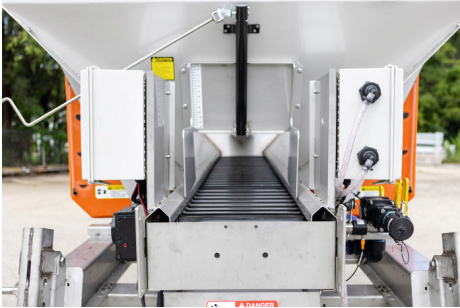
## Your benefits

- **Cost-effectiveness:** Electric motors can be less expensive than hydraulic counterparts. There is no need for a complete and expensive hydraulic system.
- **High positioning accuracy:** They offer programmable speeds and precise stopping positions.
- **Smooth and quiet operation:** Electric motors run more smoothly and quietly.
- **Reduced maintenance:** Electric motors require less upkeep compared to other systems.
- **Eco-friendly:** They offer a green, clean air solution.

## Performance features

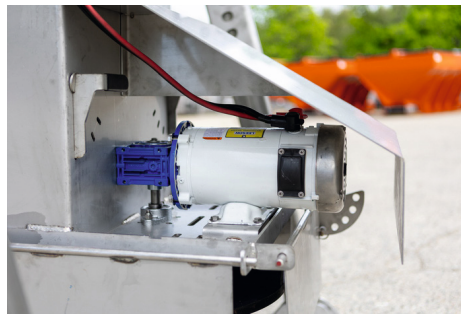
### Concept

The maintenance-free stainless steel hopper features 45° sloped sides for efficient material flow and an electrically driven chain-fed salt spreader. It also includes a standard inverted V design to keep weight off the drag chain for optimal performance. Additionally, the setup boasts an adjustable height spinner extension and a standard swing-up spinner assembly for versatile operation.



### Environmentally friendly electric drive

The spreader is powered by two independent 3/4 HP DC motors. One keeps the conveyor chain moving while the other mounts on the spinner to spread the material.



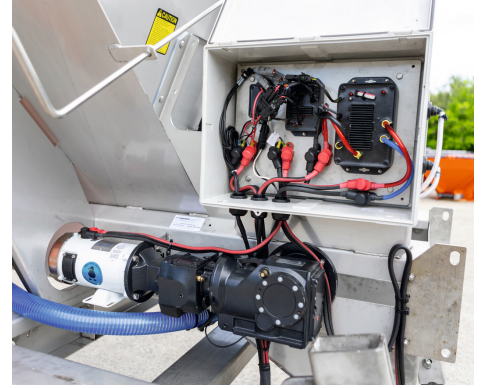
### Control and information technology

The spreader is controlled by a Force America in-cab controller which has variable speeds for the conveyor system as well as the spinner.

### Options

- Pre-wetting system
- Tie down kit
- Vibrator kit
- Cab shield
- Leg stands
- Observation platform
- Sloped front
- Belt over chain
- Grease extension to rear
- Rubber side shields

## Gallery



## Related products

**EV100 Stock V-Box Spreader**  
Spreader



**SEL-Series Under Tailgate Spreaders MDV Select**  
Spreader



## Technical data

<b>Hopper</b>	
Hopper capacity	6.1 - 9.5 yd <sup>3</sup>
<b>Conveyor system</b>	
Conveyor system	Drag chain
<b>Dimensions</b>	
Hopper length	8' - 16'
Hopper width	82"
Hopper height	50" / 56" / 62"
<b>Weights</b>	
Empty weight approx.	< 5,000 lbs



© Aebi Schmidt Group  
[www.aebi-schmidt.com](http://www.aebi-schmidt.com)

Aebi Schmidt North America Inc.  
Chilton, WI 53014, USA

All rights reserved. Technical data is  
subject to change.  
Illustrations are not binding. Errors and  
amendments excepted.

Document created on 5 SEP 2024

